

10620

HYDRAULIC CRANE



Summit's truck mounted service cranes are designed to meet the demands of today's heavy equipment service industry. Whether deep in a mine or out on a construction site, our heavy duty cranes have a proven track record for dependability. Through strength, reliability and safety, Summit Cranes get the job done.

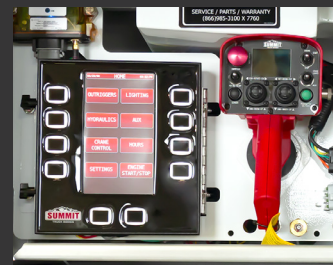
10620 CRANE SPECIFICATIONS

Max. Lifting Capacity	10,000 lb. (4535.9 kg)
Crane Rating	60,000 ft-lb. (81.3 kN-m)
Horizontal Lifting Radius (ret)	12' 9" (3.88 m) from CL of Crane
Boom Extension	1st Stage Hydraulic 61" (154.9 cm) 2nd Stage Hydraulic 58" (147.3 cm)
Max. Horizontal Reach (ext)	20' 8" (6.29 m) from CL of Crane
Boom Elevation	-5° to 75°
Stowed Height (crane only)	41.8" (106.7 cm)
Rotation	400° Power
WINCH SPECIFICATIONS	
Rope Diameter	7/16" (1.1 cm)
Max. Winch Line Pull Speed	60 ft/min (18.2 m/min)
Max. Single Part Line	5,000 lb. (2267 kg)
Max. Double Part Line	10,000 lb. (4535 kg)
Lifting Capacities	10,000 lb. @ 6' (4500 kg @ 1.83 m) 6,650 lb. @ 9' (3000 kg @ 2.74 m) 5,000 lb. @ 12' (2250 kg @ 3.65 m) 4,000 lb. @ 15' (1800 kg @ 4.57 m) 3,300 lb. @ 18' (14500 kg @ 5.48 m) 3,000 lb. @ 20' (1350 kg @ 6.31 m)
Mounting Space Req'd	21" x 25" (53.3 cm x 63.5 cm)
Approx. Weight	2,320 lb. (1052 kg)
Controls	Wireless Control System Standard
Power Supply Req'd	PTO & Pump 8 gpm (30.2 lpm) @ 2800 psi All-in-one power unit

ADVANCED SAFETY ELECTRONICS

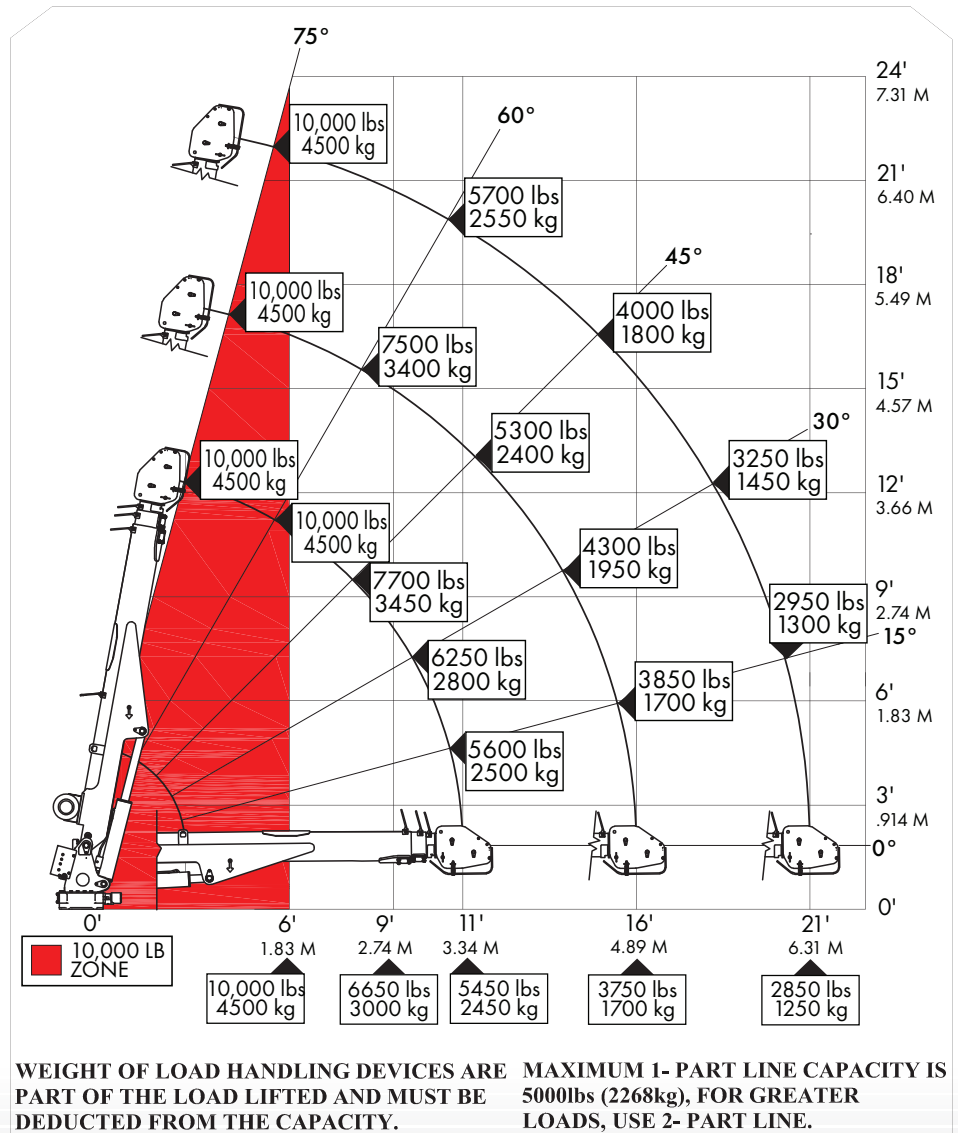
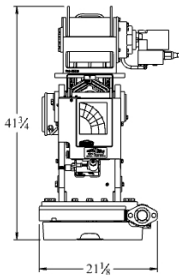
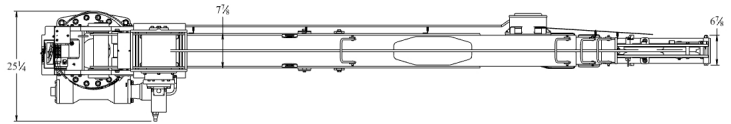
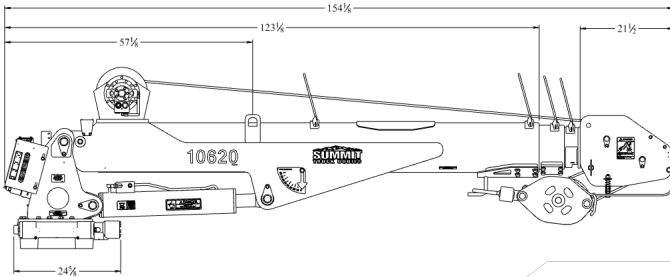
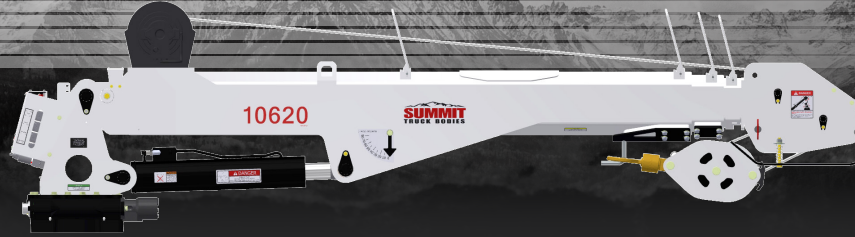


- Increase OSHA Dart Rate and ROI
- Operate and monitor the crane, outriggers, engine, PTO, air compressor, hydraulics, and lights
- Three control points: main control in rear compartment, cab control panel, and wireless remote control
- Prevents crane functionality under unsafe operating conditions
- Digital displays of real-time load moment indicator (LMI) data on the main panel and remote control
- Displays alert in plain text, e.g., oil temp, outriggers not deployed, crane overload, pendant not stowed, etc.
- Self-diagnostic checks upon start-up and during operation
- Systems control made in America with military-grade switches & solid-state componentry. Dust-tight and waterproof
- Incorporate telematics data into your fleet management solution
- ASE is standard on all hydraulic crane service trucks



SCAN TO LEARN MORE ABOUT ASE





- ### HYDRAULIC CRANE FEATURES
- Boom mounted winch
 - 400° Rotation
 - Overload Protection
 - Auto release hook stow
 - PPG powder coated boom
 - ANSI B30.5 and OSHA 1910.180
 - ASE Phase 4 control system standard
 - Phase 1 control system standard for ship-out cranes.

WEIGHT OF LOAD HANDLING DEVICES ARE PART OF THE LOAD LIFTED AND MUST BE DEDUCTED FROM THE CAPACITY. MAXIMUM 1- PART LINE CAPACITY IS 5000lbs (2268kg), FOR GREATER LOADS, USE 2- PART LINE.

